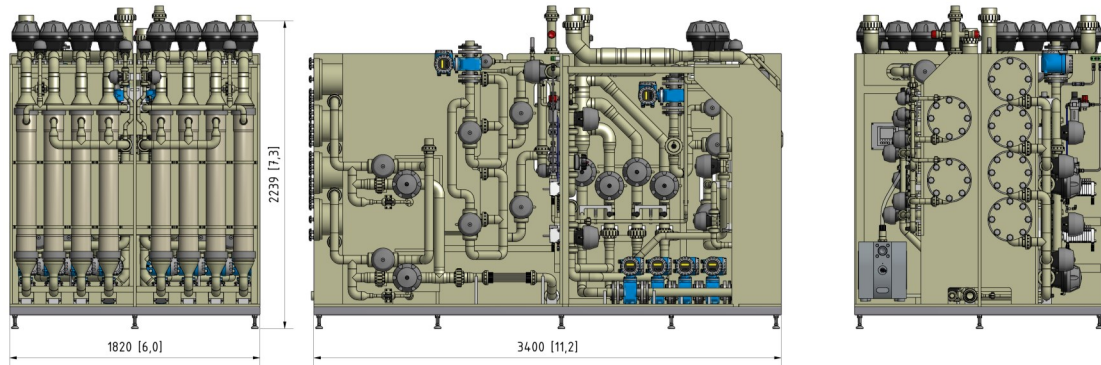
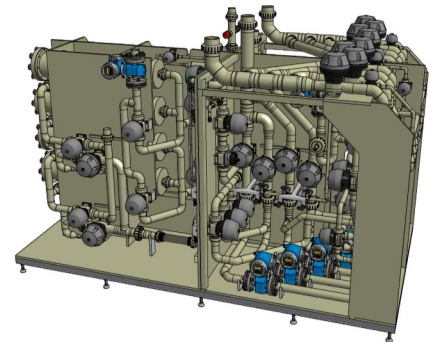
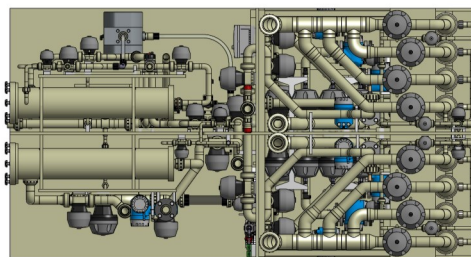


Slurry Recycling Module 9.0 m<sup>3</sup>/h



Storage Tank	Calculated according to customer specifications
Permeate Tank	
Recirculation Tank	
Size (L/W/H)	3400/1820/2239 mm 11.2/6.0/7.3 ft
Weight	2.0 t (empty) 2.6 t (maximum)



Remarks: The following specifications are only valid at a concentration level of solids more than 15% of SiO<sub>2</sub> slurry. Less concentrations than 15% or other slurry variants on demand.

Specifications and key features

- Recycling of used Slurry, recycling rate > 80%
- Recycling of used water, recycling rate > 80%
- Liquid extraction > 150 l/min and > 3bar
- TCP/IP-based remote maintenance
- Fully automated system
- User-friendly touchscreen interface
- S7 PLC control system
- Visible/ Audible warnings and alarms
- Password protected operating levels
- High security standards
- Real time pre-alert for filter exchange
- CE certified

Materials

- PP
- PFA
- PVC

Operating system

- Movicon Scada/HMI
- MS Windows

Standard analytics

- Density
- Total % solids
- pH
- Conductivity

## Slurry Recycling Module 9.0 m<sup>3</sup>/h

### Quality control optional

- Viscosity
- PSD
- Metal analytics
- LPC large particle counter
- Zetapotential
- Silica

### Requirements

- Organic solvent/oxidizer free wastewater
- Temperature: 15°C - 30°C / 59°F - 86°F
- No contaminations of copper or tungsten
- pH: 2 - 11

### Technical Data

Utilities	Utilities consumption / production	Connection
Slurry recycled	Depends on % solids of wastewater	D 40 / 1" PFA
Water recycled (Permeate)	9.0 m <sup>3</sup> /h (2,378 gph) @ < 0.02 MPa	D 40
CMP Wastewater	10.6 m <sup>3</sup> /h (2,800 gph) @ 0 MPa	D 50
Stabilizer KOH (48%) Stabilizer NH4OH (29%)	approx. 7 ml (0.24 fl oz) per Liter of recycled Slurry approx. 70ml (2.4 fl oz) per liter of recycled Slurry	D 40 / ½" PFA
Waste drain	< 2.0 m <sup>3</sup> /h (528 gph) @ 0 MPa	D 63
Compressed air	< 25 Sm <sup>3</sup> /h (SCM/h) @ > 0.45 MPa	1/2" SS
Nitrogen	< 35 Sm <sup>3</sup> /h (SCM/h) @ > 0.45 MPa	1/2" SS
Overflow	< 10 Sm <sup>3</sup> /h (SCM/h) worst-case	D 63
Exhaust	100 m <sup>3</sup> /h (26,417 gph)	D 110
Electrical Power	(3 x 400VAC) ± 5% @ 50/60 Hz	

THIS DOCUMENT CONTAINS INFORMATION THAT IS SUBJECT TO CHANGE WITHOUT NOTICE.

No part of this publication may be reproduced or transmitted in any form or by any means, electronic or mechanical, including but not limited to photocopying, recording, information retrieval systems, or computer network without the written permission of HighQ-Factory GmbH.

All other products and services mentioned may be trademarks or service marks of their respective owners.

Covered by patent DE102011056633(B4). WO2013/092606(A1), WO2011/042017(A1) and other patents are pending.

©2010-2014 by HighQ-Factory GmbH. All rights reserved.